

Built in The United States of America



**AB** ALLEN BUILDWELL  
PRIVATE LIMITED



## SX-5e Stabilizer-Reclaimer



The Roadtec mid-size SX-5e stabilizer-reclaimer features a new 513 hp (382 kW) Cummins® QSG12 engine. It joins the larger 620 hp (462 kW) model in the company's line of stabilizers-reclaimers. The SX-5e complies with Tier 4 Final and Stage IV emission standards. Weighing in at 26,770 kg, the SX-5e is nimble yet powerful.

**A high torque hydrostatic cutter drive and multiple cutter speeds provide performance in both soil stabilization and asphalt reclamation**

**Roadtec** stabilizers are ideal for road rehabilitation, cold recycling, and soil stabilization.



## Soil Stabilization

Soils with insufficient strength are stabilized by uniformly mixing cement, lime slurry or emulsion to a depth up to 400mm. The material is then graded and compacted to serve as the base for a new road surface.



### Full Depth Reclamation

The full thickness of the asphalt surface and a portion of the underlying base are uniformly graded and pulverised to serve as the base for a new surface course.

Lime and/or cement stabilisation is often used to improve the properties of site materials, to enable their use in a pavement and other like areas, such as dam foundations and building pad sites.

**“High torque hydrostatic drive with dual planetary gearboxes into the cutter drum”**



## General Specification: **SX-5e**

<b>Engine:</b>	<b>Cummins QSG 12 T4F</b>
<b>Hp(kw):</b>	513 (382)
<b>Cut Width:</b>	2440mm
<b>Cut Depth:</b>	406 mm
<b>Rotor Width:</b>	50" 1270mm. Also known as Tip diameter.
<b>Drive: .</b>	Hydraulic, dual pump/motors, 180CC
<b>Cutter Speed:</b>	90-150 rpm. Controlled by Computer in increments of 5.
<b>Operating Weight</b>	26,770 kg . Distributed Front Axle: 12,300 kg & Rear Axle: 14,470 kg.
<b>Electrical system</b>	CAN-bus serial communication system.
<b>Steering</b>	Joy stick controlled, 4 steering modes, coordinated steer, crab steer, front steer only, rear steer only. InsideTurning radius 7.17m.
<b>Traction</b>	2 drive pumps and 4 Drive motors with Flow divider for maximum tractive effort.
<b>Speed:</b>	Travel 10kph. Work speed : 7 to 57m per minute.
<b>Tires</b>	Heavy-duty, single piece wheels prevent rim slippage and tire failure. High floatation deep tread.
<b>Hydraulic Tank Capacity:</b>	341 litres.
<b>Fuel Tank Capacity:</b>	1060 litres
<b>Electrical System:</b>	Volts 24
<b>Overall length:</b>	9.42m from Front Tow Hook of Water system to the outer edge on the rear of the machine.
<b>Shipping width:</b>	2.46m
<b>Shipping height:</b>	3.38m

# ROADTEC

an Astec Industries Company



**Factory & Training Centre: 800 Manufacturers Rd, Chattanooga, TN 37405, USA**



**Roadtec Quality And Service Behind Each Product**

# SOIL STABILIZER : Working Analysis



## Model SX-5e



### ROADTEC WORKING ANALYSIS PER DAY IN CU.M

Column1	Column2	Column3	Column4	Column5	Column6
<b>For Soil Mixing (CMS) or Working with Soil</b>					
Working /Hour	Length Metre	Width. Meter	Depth. Meter	Diesel Consume L/Hr	Working per day (8 Hours) Cu.m
1	660	2.4	0.25	25-28	3168
1	350	2.4	0.40	30-35	3024

Column1	Column2	Column3	Column4	Column5	Column6
<b>For CTGSB or Working with GSB</b>					
Working/Hour	Length Meter	Width Meter	Depth Meter	Diesel Consume L/Hr.	Working Per day (8 Hours) Cu.m
1	540	2.4	0.25	30	2592
1	300	2.4	0.4	35	2304

**Note: This is general idea about the working analysis and it may vary due to various factors and reason on sites.**

Column1	Column2	Column3	Column4	Column5	Column6
<b>For Working with WMM</b>					
Working/Hour	Length Meter	Width. Meter	Depth Meter	Diesel Consume L/Hr	Working Per Day (8Hours)) Cu.m
1	660	2.4	0.25	30	3168
1	350	2.4	0.4	35	3024

### Water System



1325 LPM water system is Ideal for soil stabilization

### High Capacity Water-Emulsion Additive System



1895 LPM additive system capable of injecting water or emulsion for asphalt reclamation. Easily open and close nozzles on the spray bar from the operator station

## Air conditioned Operators cabin:

Pressurised Cab with standard climate control system (air condition). Standard Rear back-up camera. Simple Joy Stick controls and a vivid colour control screen enhance the machine's ease of operation.



**Standard feature..**



**“ Reduces operator fatigue...  
Increases productivity due to  
ease of operation “**



### Joystick Controls

Travel Speed Selection  
Steering Mode Selection  
Elevation Control  
Cycle between auto-elevation  
and travelmode.

# APPLICATIONS



## Tractive Effort

Increased tractive effort through 4 wheel drive and perfect weight balance between the front and rear axles.



**4 WHEEL  
DRIVE/CRAB STEERING**

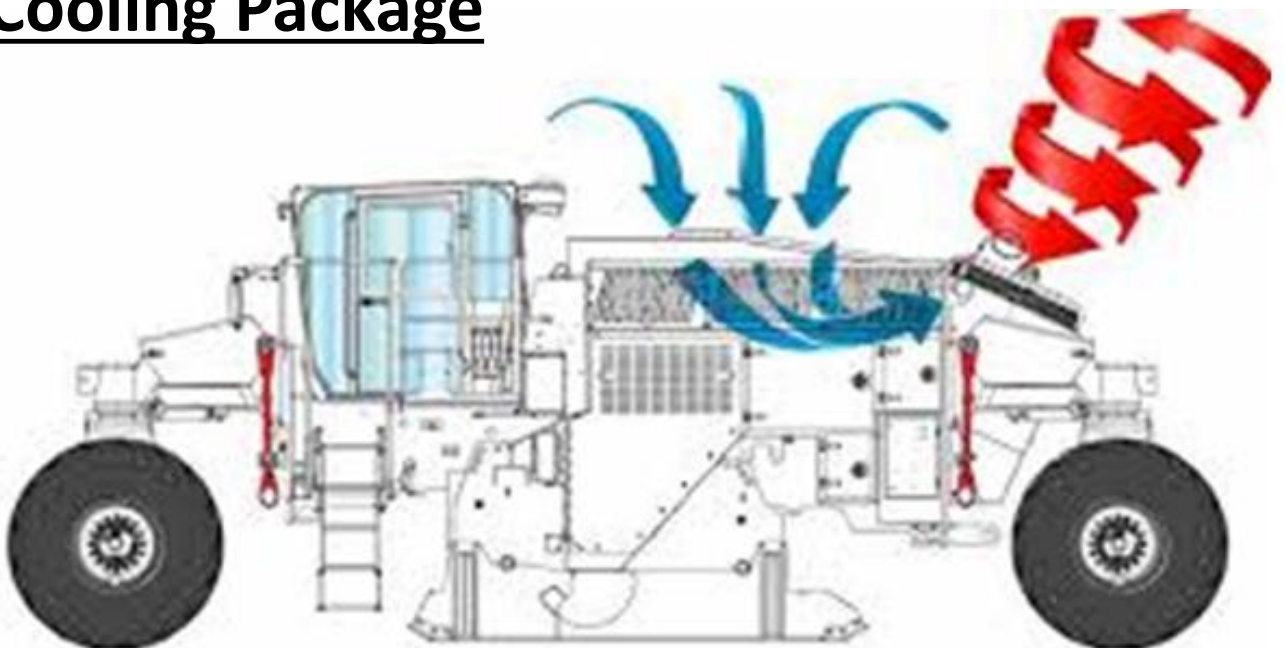
## Weight Balance:

Front Axle: 12,300 kg.

Rear Axles: 14,470 kg

The machine weight is perfectly balanced between the two axles. The ideal weight placement compliments the 4-wheel drive system and allows the machine to maintain consistent cut depths.

## Cooling Package



The SX-5e cooling package introduces air from the cleanest area possible at the top of the machine and exhausted through the rear radiator package.

This efficient design reduces the amount of dust and debris brought into the radiator package.

# APPLICATIONS



## Accessibility & Maintenance features

### EASY ACCESS & OPERATOR STATION

Hydraulically adjustable doors allow for better access to the engine compartment. • Ground level, slide-out racks provide easier access to the machine's battery compartment. • Quick and easy belt maintenance access on left hand side of Machine.

Pressurised Cab with standard climate control system ( air condition). Standard Rear back-up camera.

Simple Joy Stick controls and a vivid colour control screen enhance the machine's ease of operation.



### Control Screen ( housed in Operators cabin)



- 1) Additive Menu
- 2) Camera View
- 3) Service Menu
- 4) Cut Depth Menu
- 5) Auto-elevation activation
- 6) Load Control
- 7) Travel Speed Selection
- 8) Steering Mode Selection
- 9) Information Display.



### Water/Emulsion Additive System Controls

Easily control & monitor additive system parameters such as:

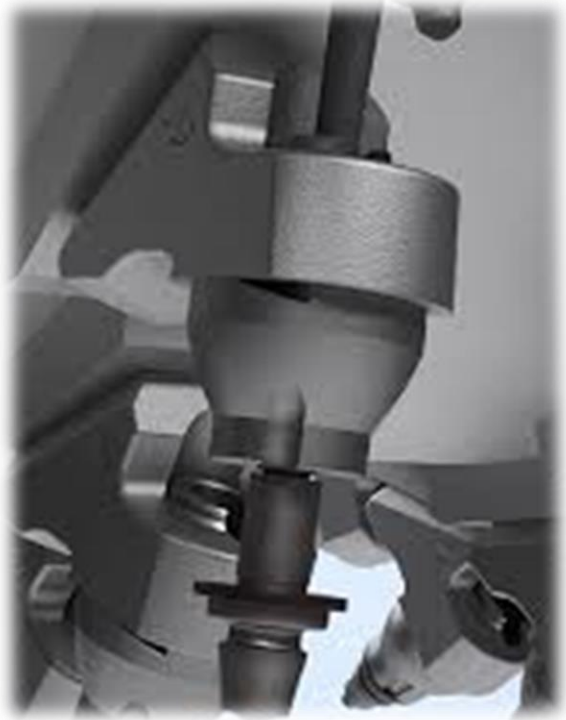
- a) Individual Spray Nozzle activation
- b) Overall system activation
- c) System mode section
- d) Additive flow intensity



# APPLICATIONS



## QX1 Quick Change Cutter Tooling



**Roadtec QX1** quick change cutter tooling is designed for high performance and extended wear life in asphalt reclamation.



The QX1 system provides substantial access to the rear of the holders, adding a new level of convenience to routine maintenance in harder to reach areas such as the cutter end rings.



Weld-On

**Weld-on tooling** is used for Soil Stabilization, because it cuts through Soil easier with less surface area/resistance.

Soil presents less concern for tooth wear and damage to the base block.

The tooth spacings are selected based on the importance of material sizing. Tighter spacings provide more finely graded material but Slow down production (fpm)



## **High Torque Hydrostatic Cutter Drive:**

With dual Planetary gearboxes into the cutter drum

**Gear Box:** W16D Fairfield Cutter gear box 20:25:1

**Standard Housing:** 244 cm. Housing.

**Standard Tip Dia.:** 1270mm



## Double Hit Drums



Above  
Double hit Quad wrap drum

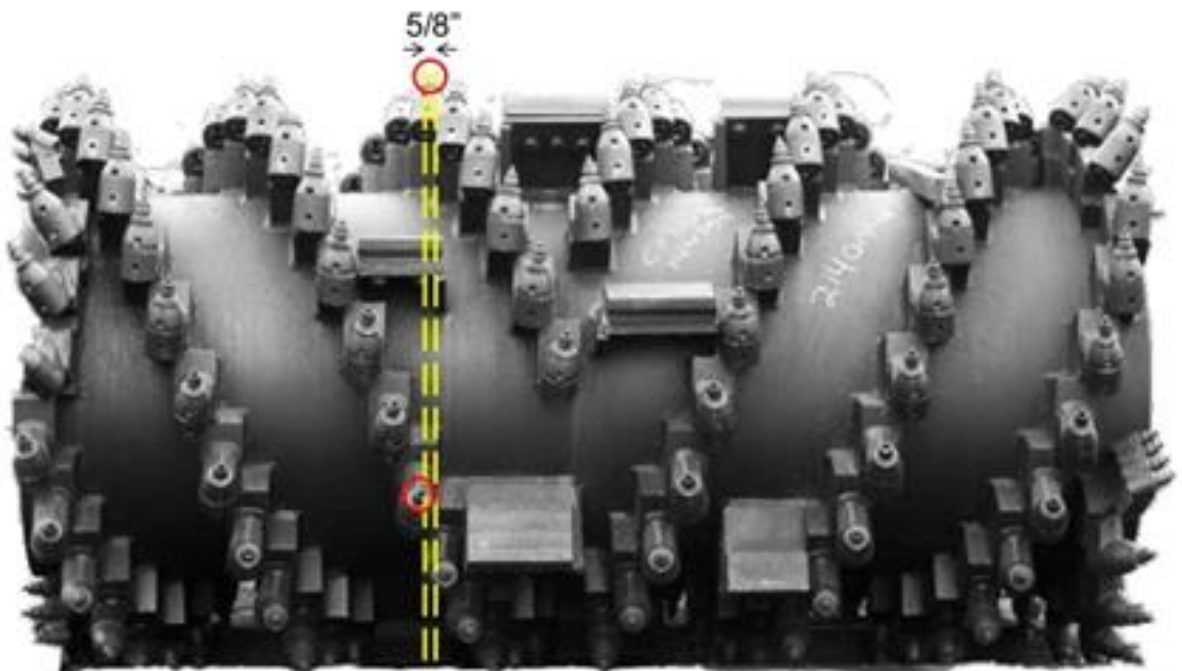
Standard triple wrap drum  
Below



Double Hit Quad Wrap Drum is designed for typical cut depths for overlays. These drums can improve forward speed of the machine without sacrificing surface texture and increase tooth life.

## Tooth Spacing:

### LINE SPACING



Spacing is customizable. Standard Drums are built with 3 scrolls of teeth spaced 16mm apart.

Drums with more teeth and smaller spacings are built to achieve a finer surface texture.

**STANDARD TOOTH SPACING: 19mm or 26.16mm**

# APPLICATIONS



## Time is Money

On-Board Diagnostics allow you to easily monitor and troubleshoot using the systems status function on the operator display

## Guardian Remote Telematics.

**STAY CONNECTED TO ROADTEC AND YOUR CREW. ADDRESS YOUR MACHINE ISSUES QUICKY AND SAVE MONEY BY ELIMINATING UNNECESSARY DOWN TIME, FALSE ALARMS AND WASTED**

### GUARDIAN TELEMATICS

The Guardian system allows service technicians and owners to protect their investment and keep operating costs low by monitoring a selected machine in real time through a wireless signal, and address any issues that may arise while the machine works. It also allows Roadtec customer service personnel to remotely view the machine in real time and be there for the customer anytime, anywhere. The engine, hydraulic system, electrical system, and grade control can all be monitored in detail. The machine can also be located by GPS using the Guardian system.

Diagnosing a machine equipped with the Guardian system is a much quicker and more efficient process. Guardian's intuitive Live Schematics™ allow owners and technicians to see all electrical circuits in a simple and efficient layout with real time status of all switches, valves and settings. Changes to the SmoothMill™ grade control system parameters can be made from a laptop without touching the machine. The Guardian system will also e-mail fault codes, service reminders and production reports to the owner and service department to keep them conveniently informed on the status of their machine. Staying up to

date with the latest information on each machine will allow contractors to be much more proactive in monitoring and lowering their operating costs.

The owner of the machine can log on to the Guardian system and view his machine's speed, location, engine load, And fuel usage, all in real time,



without being on the job site. **It is like being on the machine.**

Roadtec feels that one of the most important and rewarding services we can provide our customers is training.

Whether it is service and maintenance training or operations and best practices training, our expert service and application personnel can fill that need.

**For more detailed information & offers Please contact our Sole Representatives for the Indian Sub continent:**

Disclaimer: The technical description mentioned in this catalogue are general and subject to any changes during improvements.



**Mumbai Sales Office:** B 206, Arjun  
Centre,

Govandi (E), Mumbai-88. India.

Landline: 022 -25569044,  
25513030

**Web Site:**

[www.allenbuildwell.com](http://www.allenbuildwell.com)

**Email:** [info@allenbuildwell.com](mailto:info@allenbuildwell.com);

[sales@allenbuildwell.com](mailto:sales@allenbuildwell.com)

**Mumbai Sales:** 8422892959

**ALLEN BUILDWELL...in India since 1995**